

EXPERTS
FOR GROWTH



Micro-granular Fertilizer for Starter Applications



Easy Start®

- Excellent fertilizer efficiency
- Higher yields
- Extra fine granule size (0.5 – 1.5 mm)
- Environmentally friendly
- Encourages root mobilisation
- Suppression of fungal diseases



Easy Start® – How does it work?

Easy Start® is applied at sowing time. The small granule size and the placement of the fertilizer into the seed bed increases its efficiency, crop yield and quality.

- Application in “neighbourhood” of the seed guarantees emergence and first development of the root.
- Higher fertilizer efficiency under dry conditions.
- More uniform crop development in the first growing phase.
- Better/deeper root development.
- Improved physical stability of the crop and higher capacity for future nutrient uptake.
- Reduction of nitrogen leaching.
- Additional trace elements (Fe, Mn, Zn) to ensure optimal growth.
- Additional *Bacillus subtilis*, Selection E4-CDX® to increase resistance against soil borne fungal diseases.
- IBDU included for steady Nitrogen supply without leaching.
- Fine granule size within the range of 0.5 – 1.5 mm.

Fig. 1: **Root growth improvement with Easy Start®**



Left: treated with Easy Start® 30 kg/ha; right: untreated.

Fig. 2: **Extra fine granulometry of Easy Start®**



Easy Start®-Application

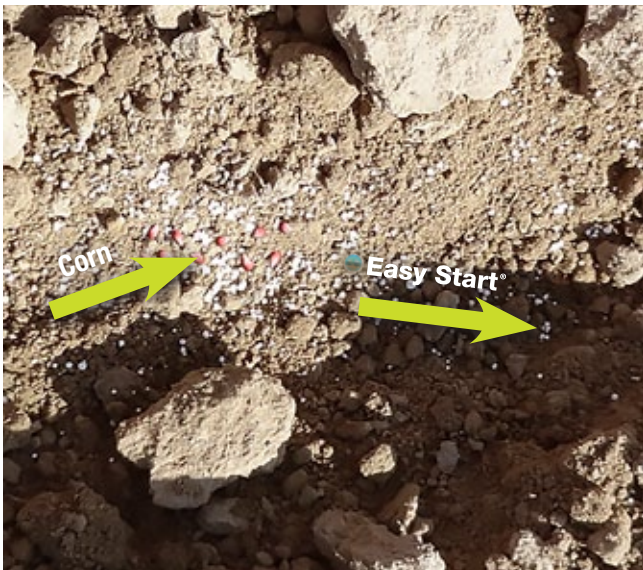
Fig. 3: Easy Start® is applied in small volumes during sowing process.
In this case the fertilizer is placed directly into the corn seed bed.



Filling of fertilizer container



Bottom view



Application during seeding process



Easy Start® – Target Crops

Tab. 1: Rates for application:

Culture	Kg/ha
Corn	20–40
Oil seed rape	20–30
Sugar beet	15–35
Cereals	20–50
Vegetables	20–40

- Fertilizer to be applied at time of sowing.
- Application may supplement standard fertilizer program to achieve significantly higher yield.
- Especially under good soil conditions the standard fertilizer program may be reduced significantly.

Easy Start® – Trial Results

Fig. 4: Product preformance at Pawlowice/Poland 2012



Left: Competitor 7-20-28 200 kg; right: Easy Start® TE-Max BS 30 kg/ha





Easy Start® – Advanced Technology

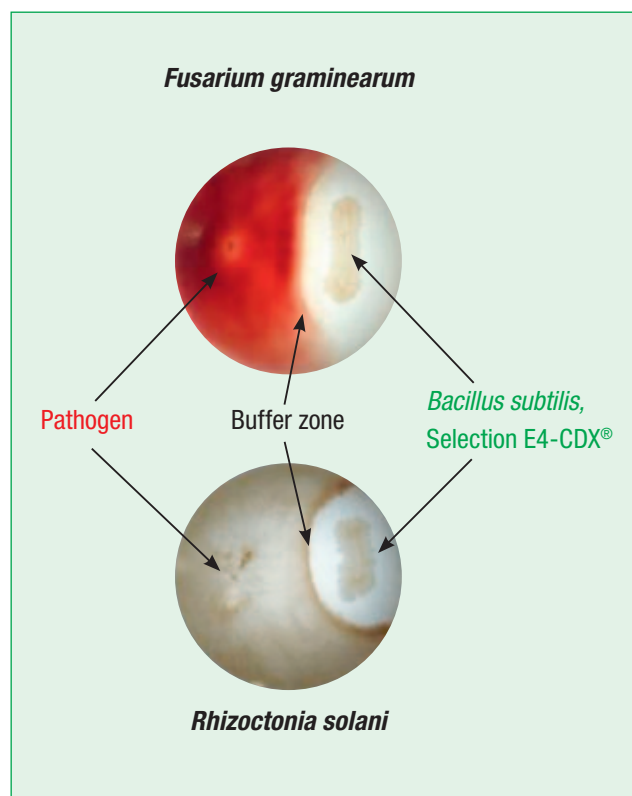
Easy Start® TE-Max BS

- Addition of *Bacillus subtilis*, Selection E4-CDX® to suppress soil-borne fungal diseases in the initial phase after germination.
- *Bacillus subtilis*, Selection E4-CDX® spores are tolerant to adverse conditions such as pH, salinity, heat, drought, radiation.
- *Bacillus subtilis*, Selection E4-CDX® colonizes the root system and competes with certain fungal disease organism (e.g. *Phytophthora*, *Pythium*, *Rhizoctonia*, *Fusarium*, *Peronospora*).
- *Bacillus subtilis*, Selection E4-CDX® is not toxic.
- Trials showed increases from 11.6 t/ha to 11.9 t/ha in corn, vs. standard Easy Start® TE-Max.

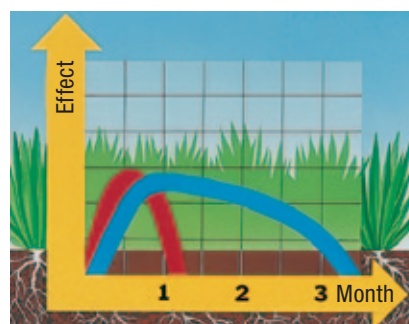
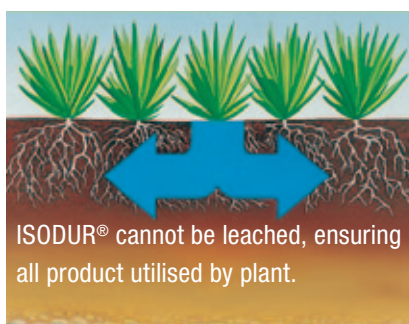
Easy Start® Microfast/Easy Start® Plus:

- Addition of ISODUR® for slow release Nitrogen supply.
- ISODUR® is COMPO EXPERTs unique slow release Nitrogen which has proven excellent efficiency.
- Reduction of leaching.
- Reduction of burning and salinity.
- Sustainable N-Nutrition in the most critical growth stage.
- High fertilizer efficiency.
- Environmental benefits.

Fig. 5: Competition of *Bacillus subtilis*, Selection E4-CDX® against fungi pathogens on turf.



ISODUR® – How does it work?



- In the first phase, ISODUR® is broken down via hydrolysis into its original constituents at a rate dependent on temperature and moisture. These factors also control plant growth, so the release rate is in line with the biological demand of the plant.
- Efficient slow release effect even under difficult soil conditions, such as pure sand constructions.
- In the second phase, the slow release Nitrogen is converted by micro-organism into Ammonium and Nitrate ready for plant uptake. ISODUR® is 100% plant available after conversion.
- By using slow release ISODUR® Nitrogen leaching is minimised and homogeneous growth is ensured over a period of up to 12 weeks.



Easy Start® – Microgranule for Starter Application



Product	Composition	Characteristics	Packaging	Use
Easy Start® TE-Max	11-48-0 (+0.6Fe+0.1Mn+1.0Zn)	NP starter Fertilizer - 46% water soluble P_2O_5 - incl. TE - granule size: 90% within 0.5 – 1.5 mm	Bag: 10 kg Pallet size: 100 x 10 kg Container: 20': 20 mt	Application: 20 – 40 kg/ha
Easy Start® TE-Max BS	11-48-0 (+0.6Fe+0.1Mn+1.0Zn) + <i>Bacillus subtilis</i> , Selection E4-CDX®	NP Fertilizer - <i>Bacillus subtilis</i> Effect or healthy crops - granule size: 90% within 0.5 – 1.5 mm	Bag: 10 kg Pallet size: 100 x 10 kg Container: 20': 20 mt	Application: 20 – 40 kg/ha
Easy Start® Microfast	13-40-0 (+0.2Fe+0.7Mu+1.0Zn)	NP Fertilizer - 38% water soluble P_2O_5 - product contains 3% ISODUR®-N for slow release n Nutrition - granule size: 90% within 0.5 – 1.5 mm	Bag: 10 kg Pallet size: 100 x 10 kg Container: 20': 20 mt	Application: 15 – 30 kg/ha
Easy Start® Plus	18-24-5 (+1.0Fe+0.5Mn+1.0Zn)	NPK starter Fertilizer - 19% water soluble P_2O_5 - product contains 7.2% ISODUR®-N for slow release n Nutrition - granule size: 90% within 0.5 – 1.5 mm	Bag: 10 kg Pallet size: 100 x 10 kg Container: 20': 20 mt	Application: 15 – 30 kg/ha



Folder EasyStart® 2013